

Minutes of the 38th Meeting of the Sunnyside Coal Mine Community Consultative Committee

Meeting Held: Wednesday 18th June 2025

Venue: Namoi Valley Brickworks

Present: Michael Broekman [MB] (Chairperson), Daryl Robinson [DR] (Env & Rehab Manager WHC), Olivia Hulbert [OH] (Advisor Rehabilitation & Closed Mines WHC), Alison Quiroz [AQ] (Officer Rehabilitation & Closed Mines WHC)

Apologies:

Lizzette Fergusson [LF]
Colleen Fuller [CF]

Minutes approved – true record by Michael

Environmental Report:

Presented by AQ. Ongoing monitoring is limited to;

- Surface and groundwater
- Monthly environmental inspections
- Quarterly weed and pest inspections (if required, baiting)
- Annual ecological monitoring (Spring)

No questions or issues raised.

General Business:

OH - Work completed in 2024 included decommissioning of 3 dams

DR - Undertaking vegetation trials in woodland.

DR - Discussion on future land use for Sunnyvale

DR - Re-alignment of original Coochooboonah road is complete.

Meeting Closed 1415

**Sunnyside Coal Mine
Community Consultative Committee
Meeting #38**

**Environmental Monitoring Report
January 2024 – December 2024**

Note: EPA licence was surrendered on 13 June 2023, all monitoring required under the EPA licence has ceased. Remaining monitoring includes, groundwater and surface water, weeds and pests and annual ecological monitoring, and monthly site inspection.

Noise Monitoring

No noise monitoring carried out. Site activities were limited to weed treatment (spraying and slashing), tree planting and minor drainage works.

Blasting

There has been no blasting during the reporting period, all site blasting has ceased.

Air Quality Monitoring

Deposited Dust and HVAS/PM10 Dust

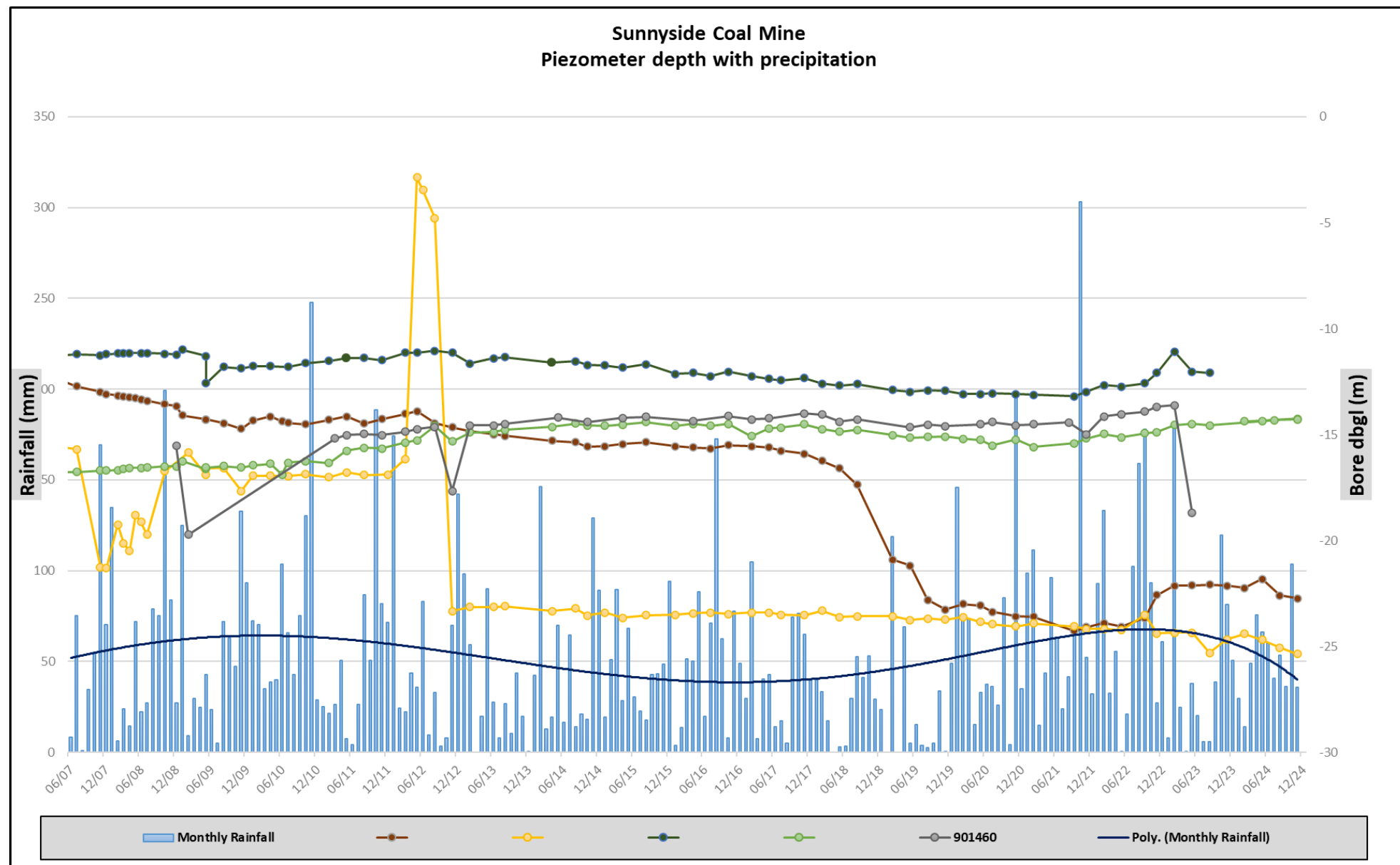
The last samples were taken on the 15th of August 2023 following the surrender of EPA licence 12987 on 13th of June 2023. Approval of the updated Air Quality Management Plan was accepted on the 10th of August 2023.

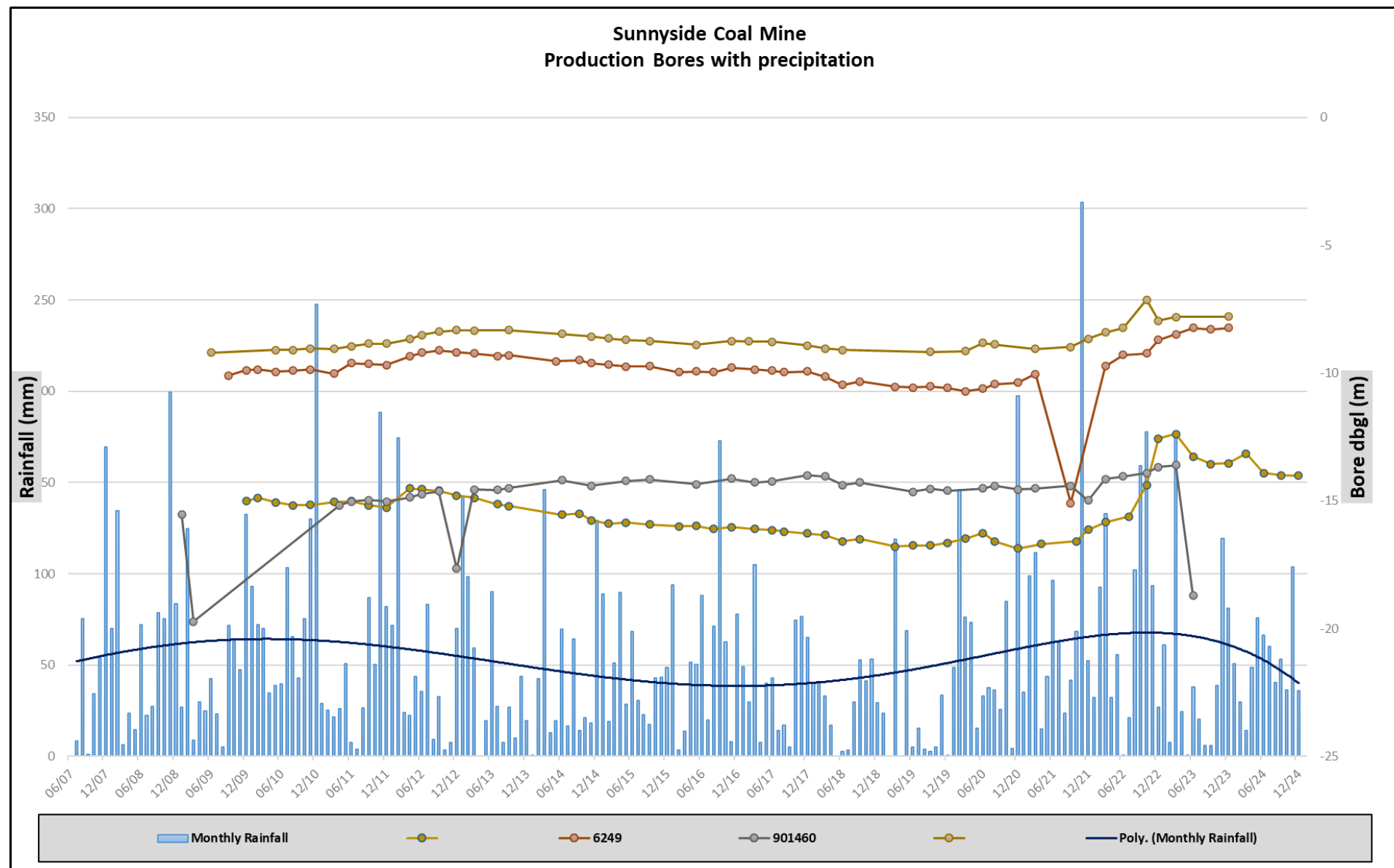
Groundwater Monitoring

Groundwater monitoring is undertaken from a range of monitoring piezometers and water bores both within and surrounding the mine site. Standing Water Level (SWL) checks are undertaken on a quarterly basis, with full water quality sampling undertaken on a 6 monthly basis.

Groundwater levels have remained stable and reflect reduced rainfall and dryer climatic conditions. Mine void was closed and made free draining in December 2020.

There has been no groundwater extraction. Groundwater licence has been transferred to another site.





Surface Water

No controlled or wet weather discharge events occurred during the reporting period.

Surface water sampling of storages onsite continues to be carried out on a quarterly basis. However, all surface dams were dry.

Complaints

No complaints have been received for the Sunnyside Coal Mine since the previous CCC meeting.

Rehabilitation

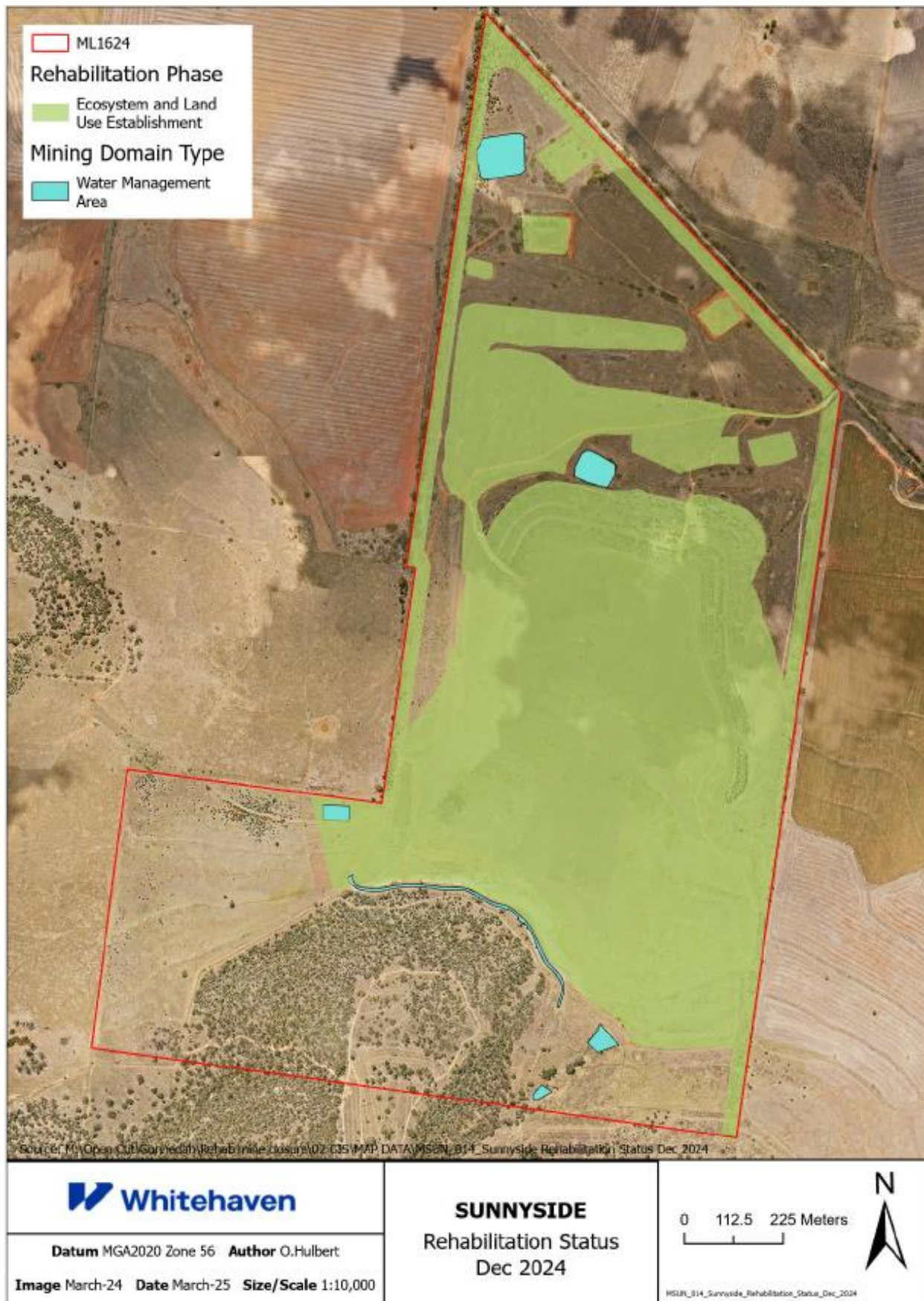
Rehabilitation to final landform and seeding was completed in 2020 and the highwall drain was completed in 2023.

Rehabilitation undertaken during the 2024 reporting period included rehab monitoring, weeds and feral animals' management, as well as maintenance of rehabilitated areas, drainage lines and drop structures.

Rehabilitation plans for 2025:

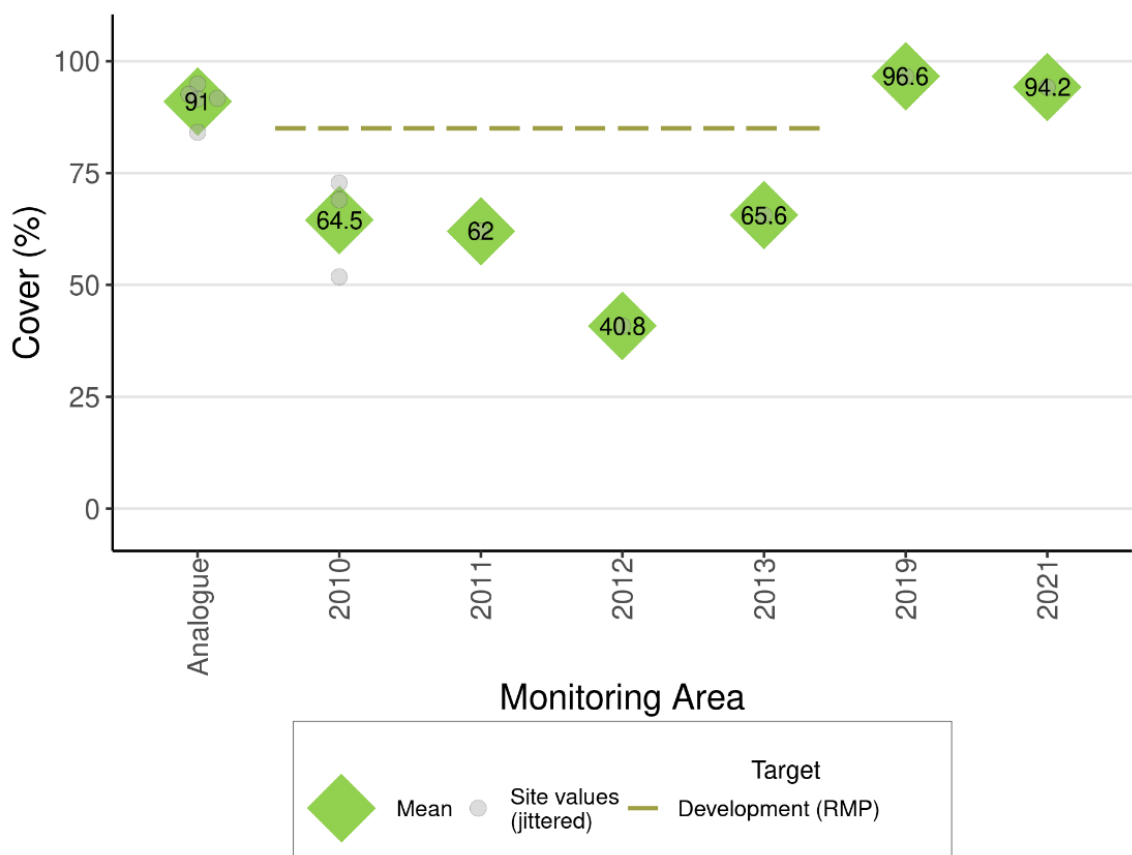
- Ecological survey
- Infill planting of tube stocks
- Weed management
- Pest control
- Rehabilitation/sealing of two remaining exploration drill holes
- Ongoing pasture grass control in woodland areas

Status of mining and rehabilitation for the reporting period is presented in the following figure.



Woodland Domain – Surface cover

In the 2024 monitoring year, rehabilitation did not achieve any of the phase-specific completion criterion targets for the indicator of surface cover in the Ecosystem Development Phase, however phase-specific targets currently do not apply to the rehabilitation seeded in 2019 and 2021.



Pasture Domain – Surface Cover

In the 2024 monitoring year, both rehabilitation areas met the phase-specific completion criterion target for surface cover. No large bare surfaces were observed in monitoring sites located in rehabilitation areas established prior to 2019. Pasture domain surface cover results shown in figure below.

